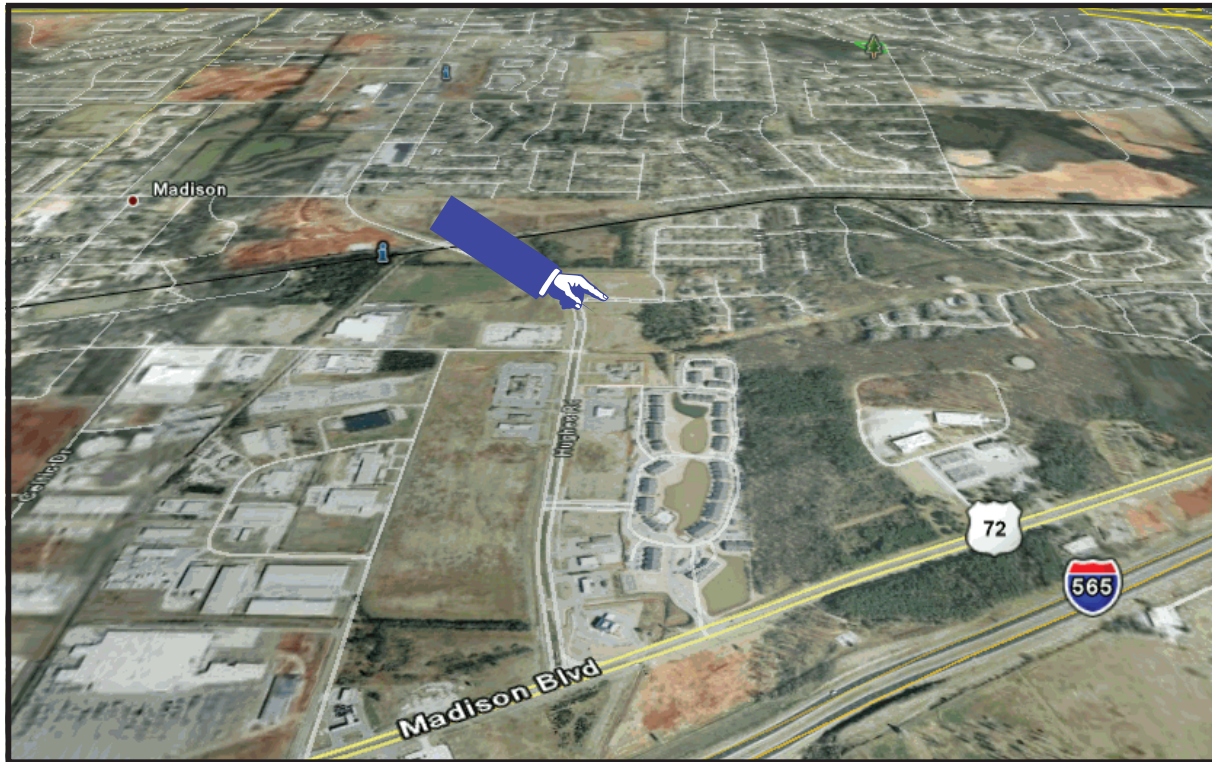


FOR SALE

PRIME MADISON DEVELOPMENT LAND

HUGHES ROAD AT HIDDEN VALLEY WAY



Excellent location on Hughes Road at Hidden Valley Way, north of Madison Boulevard in close proximity to downtown Madison, Huntsville International Airport, I-565 and just minutes from Huntsville.

ZONING: City of Madison
B-2 (Community Commercial)

NOTES:

- ★ Will Halsey Way East Drive will be constructed and continue east from Hughes Road into the 7.38 Acre tract.
- ★ The new YMCA will be built on the property just north of site.

AVAILABLE TRACTS

(see Page 2)

- Tract A - 1.54 Acres - \$18.00/sq. ft.
- Tract B - 1.39 Acres - \$12.00/sq. ft.
- Tract C - 0.97 Acres - \$10.00/sq. ft.
- Tract D - 0.97 Acres - \$10.00/sq. ft.
- Tract F - 7.38 Acres - \$4.00/sq. ft.

D. Scott McLain, CCIM

V: 256-533-3414 Ext. 142

F: 256-533-3454

EMAIL: dsmclain@ccim.net

228 Holmes Avenue, Suite 200 (35801)

Post Office Box 2199

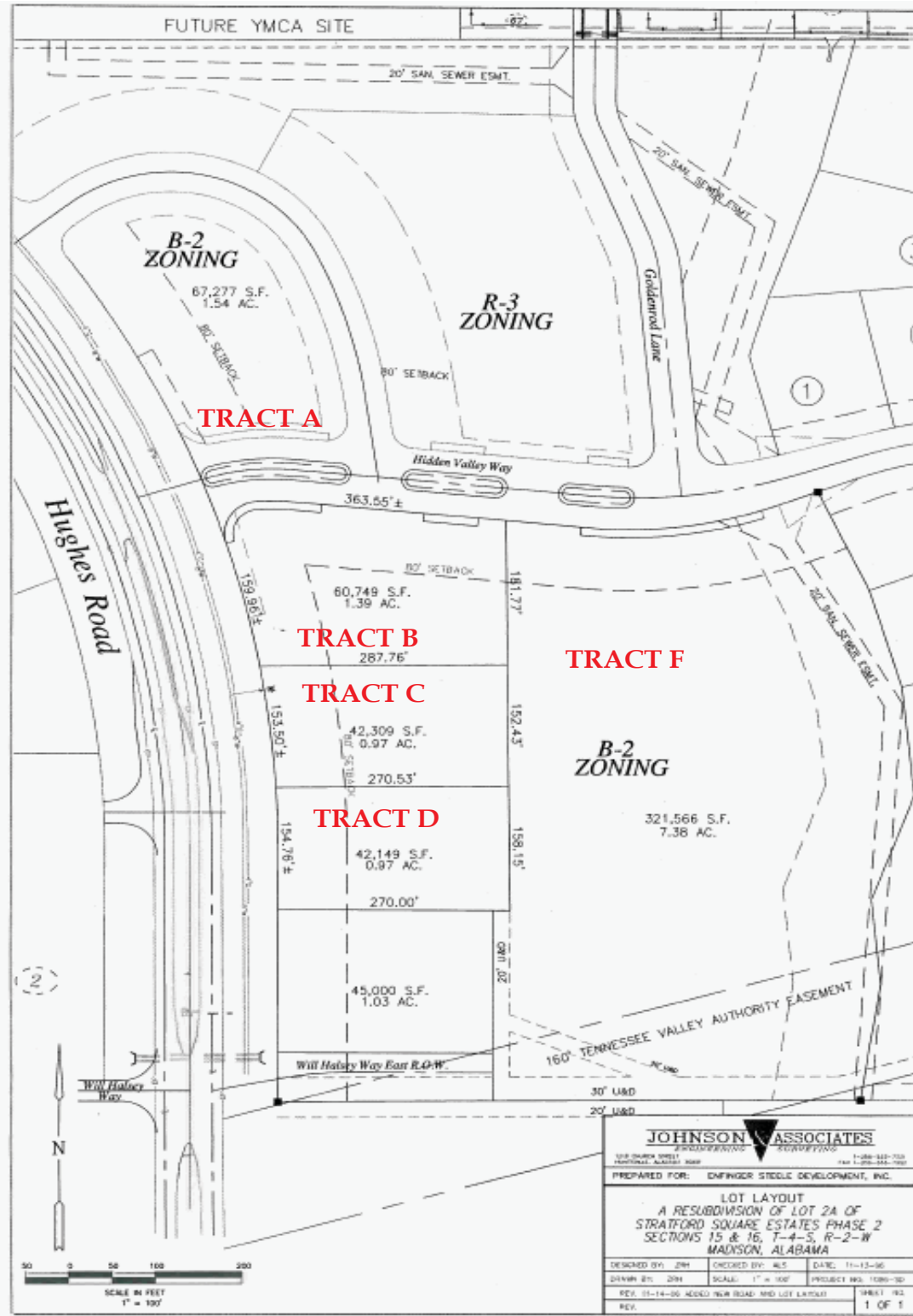
Huntsville, Alabama 35804



MCLAIN REAL ESTATE

EXCELLENT DEVELOPMENT OPPORTUNITY

PAGE 2



D. Scott McLain, CCIM
 256-533-3414 Ext. 142
 256-533-3454 (FAX)
 EMAIL: dsmclain@ccim.net

