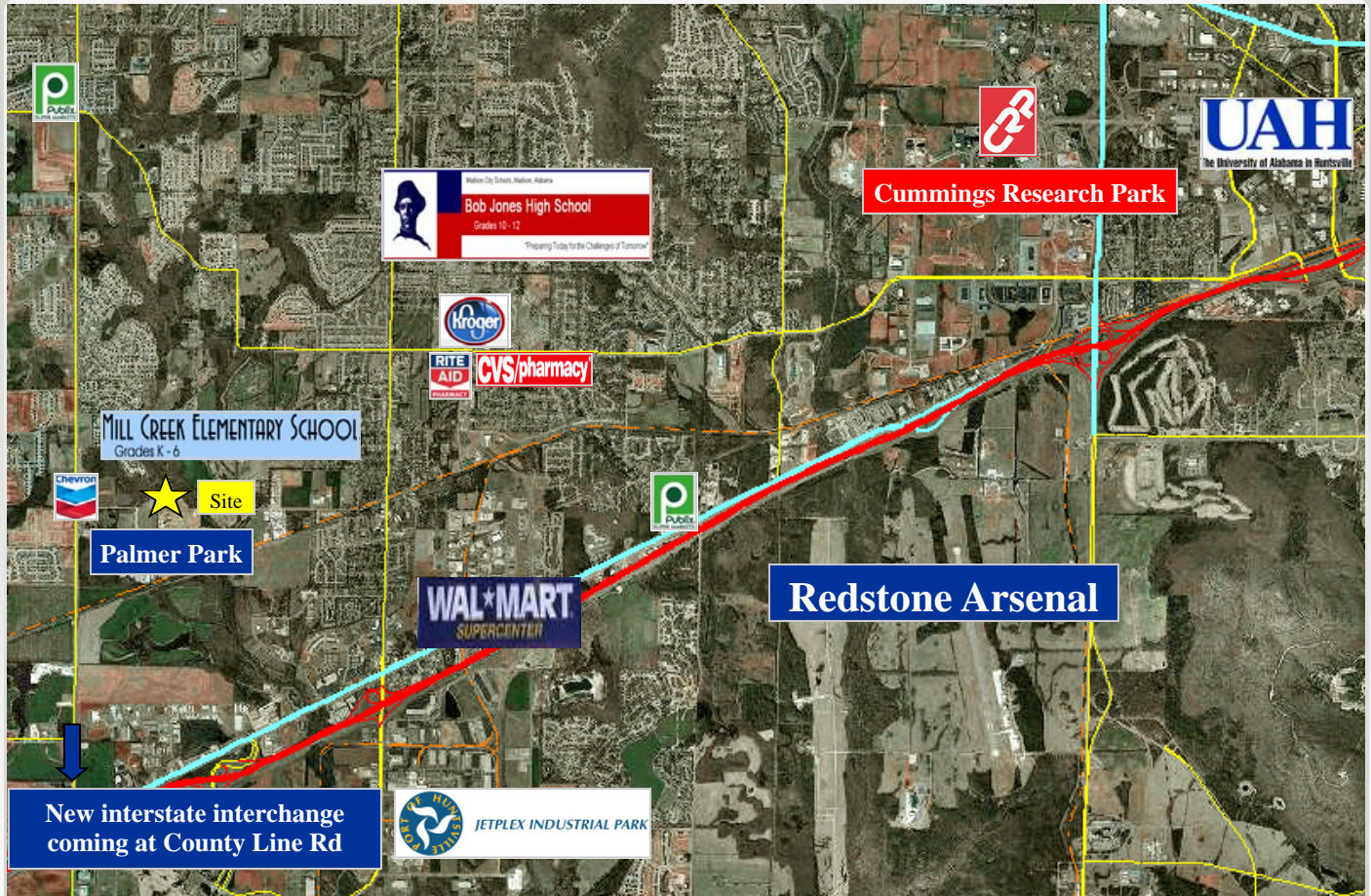


# Palmer Road Apartment Land

Palmer Road, Madison, Alabama 35758

For Sale



## Property Overview

Madison Alabama is home to award winning schools, above average household incomes, and is recognized nationally for its high quality of life. The property is convenient to schools, shopping, dining and is bordered by City of Madison Greenspace Park to the north and west, and Palmer Park to the south. This is one of only a few remaining sites within Madison City limits zoned R-4, allowing for multi-family development.

## Property Details

- ◆ Size : 15.764 Acres
- ◆ Price : \$75,000 per acre
- ◆ Zoning: R-4 with a special exception allowing 14 units per acre

## Contact Information :

Nathan Huffman  
nhuffman@mclaincommercial.com  
Phone : (256) 533-3414 Ext. 140



MCLAIN REAL ESTATE

www.mclaincommercial.com

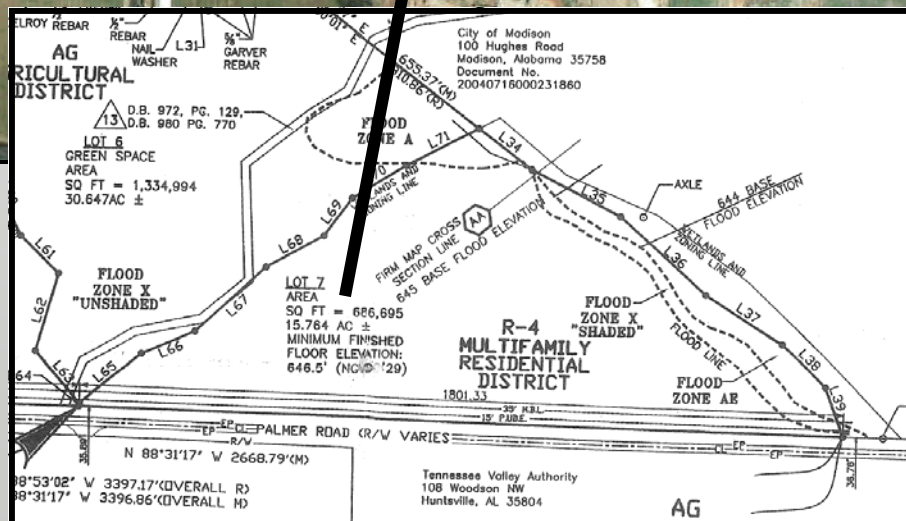
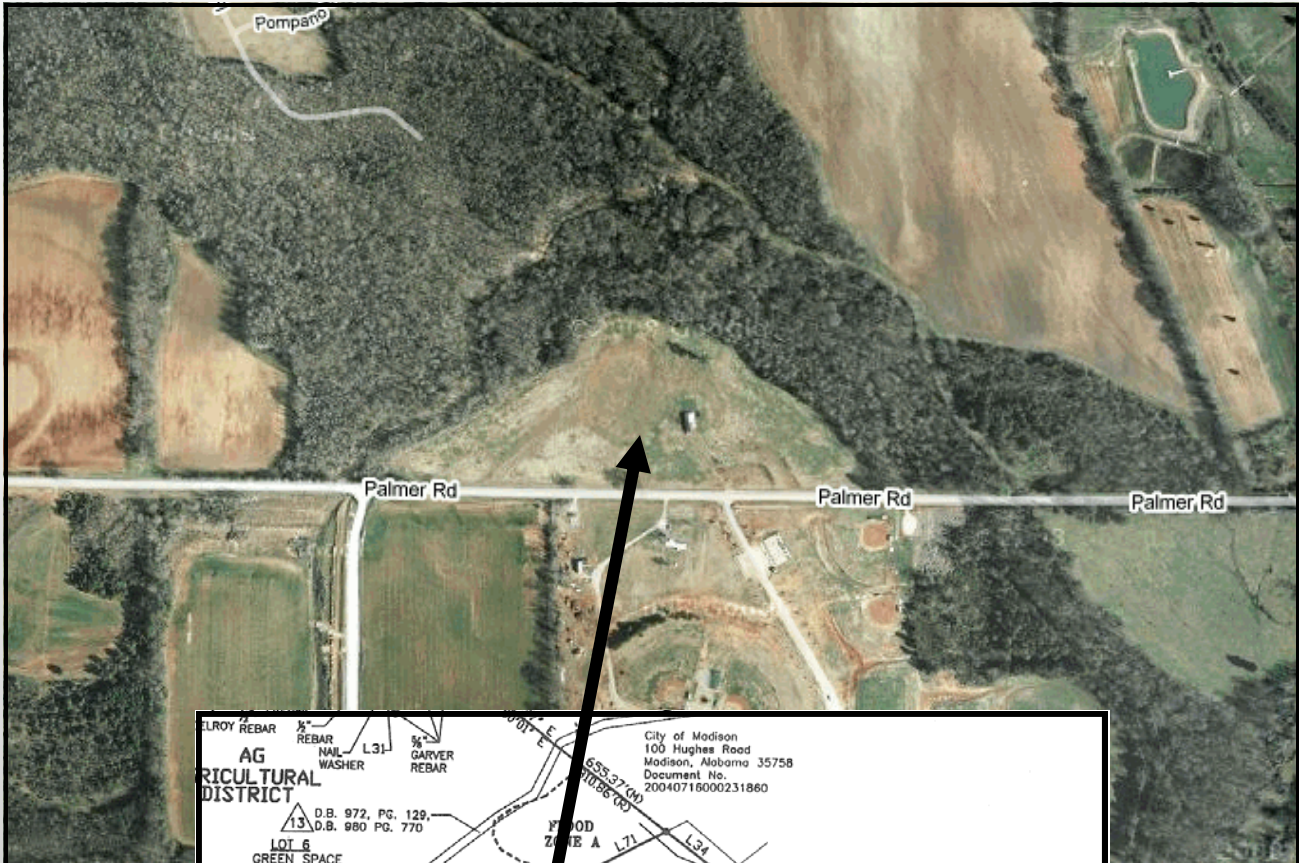
228 Holmes Avenue, Suite 200, Huntsville, Alabama 35801  
(256) 533-3414

Coldwell Banker Commercial and the Coldwell Banker Commercial Logo are registered service marks licensed to Coldwell Banker Commercial Affiliates. Each Office is Independently Owned and Operated.

# Palmer Road Apartment Land

Palmer Road, Madison, Alabama 35758

For Sale



## Contact Information :

Nathan Huffman  
nhuffman@mclaincommercial.com  
Phone : (256) 533-3414 Ext. 140



MCLAIN REAL ESTATE

[www.mclaincommercial.com](http://www.mclaincommercial.com)

228 Holmes Avenue, Suite 200, Huntsville, Alabama 35801  
(256) 533-3414

Coldwell Banker Commercial and the Coldwell Banker Commercial Logo are registered service marks licensed to Coldwell Banker Commercial Affiliates. Each Office is Independently Owned and Operated.