

Harvest Landing - Phase Two

40 Lots - Pine Landing Drive, Harvest, Alabama 35749

For Sale



Property Overview

Located in western Madison County, north of Capshaw Road, southwest of Highway 53, and east of Limestone County. Harvest is a developing residential area with a mixture of agricultural uses, churches, neighborhood businesses and residential development. This area has experienced good growth due to the short commuting times to employment centers such as Redstone Arsenal, Research Park, medical districts, airport industrial districts and within reasonable proximity to good schools and recreational facilities.

Property Details

40 Developed Subdivision Lots, Phase II of an Established Subdivision Near Sparkman High School. No Restrictive Covenants.

Lots include: public utilities to the site which include electricity, sewer and public water.

Lots are approximately .30 acres / 75' wide

Great housing development opportunity with infrastructure in place

Terms:

\$1,186,000

Contact Information :

Gloria Robertson
gloria@mclaincommercial.com
Phone : (256) 533-3414 Ext. 126

Carol Raab-Wilmoth
cwilmoth@mclaincommercial.com
Phone : (256) 533-3414 Ext. 144



MCLAIN REAL ESTATE

www.mclaincommercial.com

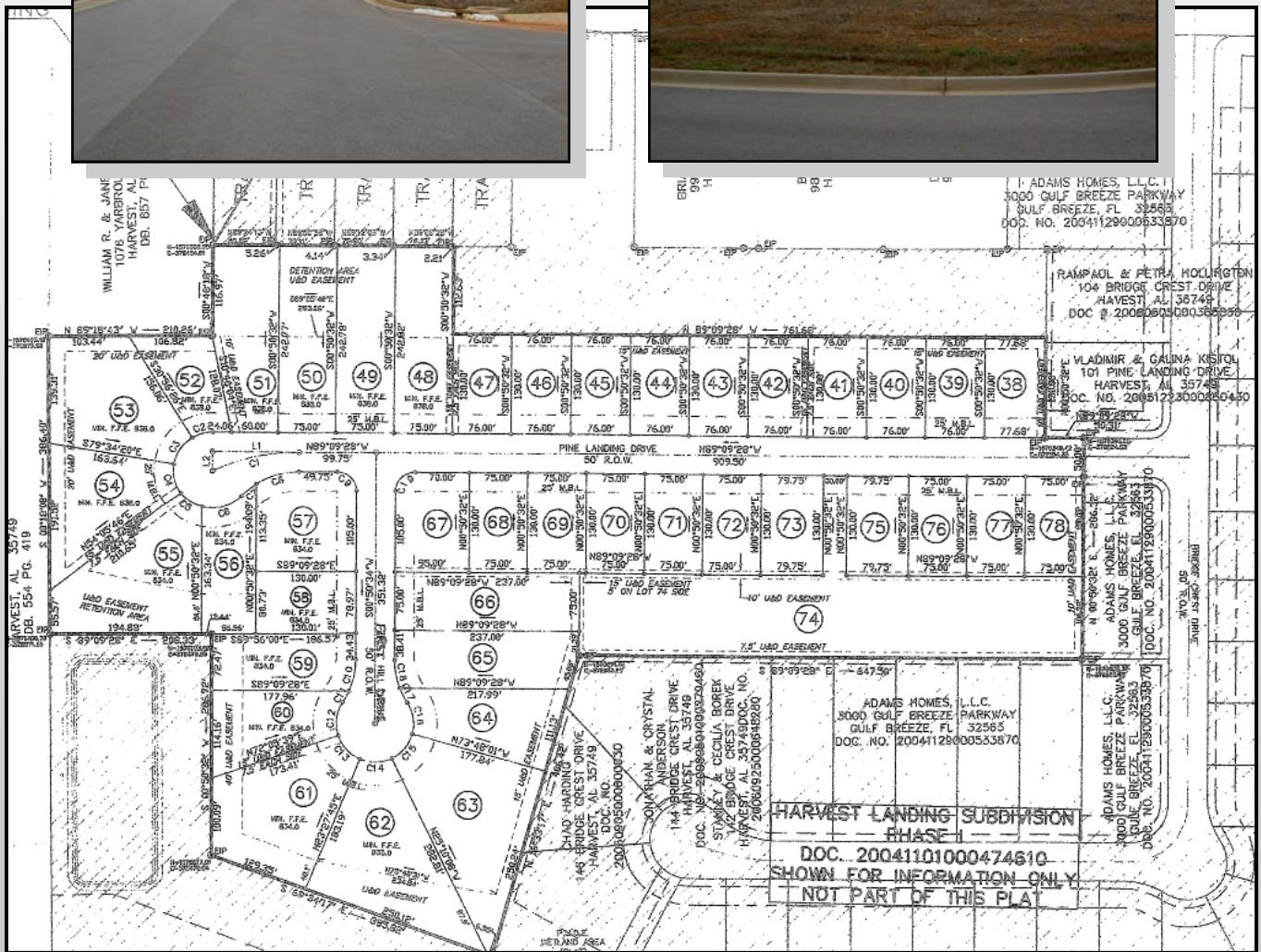
228 Holmes Avenue, Suite 200, Huntsville, Alabama 35801
(256) 533-3414

Coldwell Banker Commercial and the Coldwell Banker Commercial Logo are registered service marks licensed to Coldwell Banker Commercial Affiliates. Each Office is Independently Owned and Operated.

Harvest Landing - Phase Two

40 Lots - Pine Landing Drive, Harvest, Alabama 35749

For Sale



Contact Information :

Gloria Robertson
 gloria@mclaincommercial.com
 Phone : (256) 533-3414 Ext. 126

Carol Raab-Wilmoth
 cwilmoth@mclaincommercial.com
 Phone : (256) 533-3414 Ext. 144



MCLAIN REAL ESTATE

www.mclaincommercial.com

228 Holmes Avenue, Suite 200, Huntsville, Alabama 35801
 (256) 533-3414

Coldwell Banker Commercial and the Coldwell Banker Commercial Logo are registered service marks licensed to Coldwell Banker Commercial Affiliates. Each Office is Independently Owned and Operated.